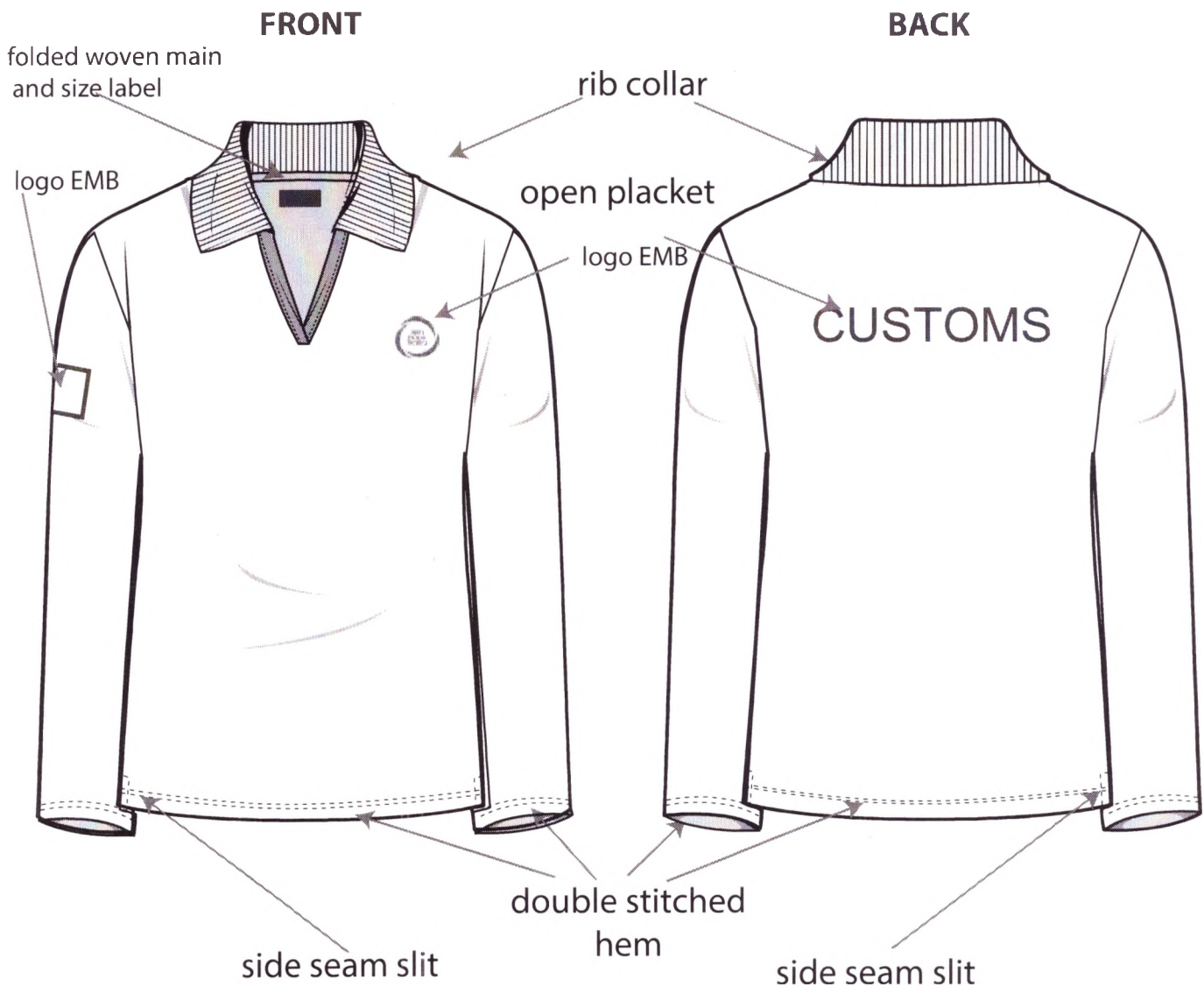


DATE: 15/9/17

DEPARTMENT: women	BRAND:	DESIGNER:
STYLE NO.:	SEASON:	DESCRIPTION: polo T shirt long sleeve
FABRIC COMPOSITION AND TREATMENT: 70%cotton 30%polyester waffle polo 200g		FABRIC WEIGHT/ GG:
COMBO'S QTY:	DD:	
PLEASE DEVELOP FIRST SAMPLE ONLY AFTER RECEIVING CONFIRMATION. FIRST SAMPLE SHOULD BE AS SIMILAR AS POSSIBLE TO ORIGINAL.		



color: blue
follow swatch color

STYLE NO.
WORKMANSHIP

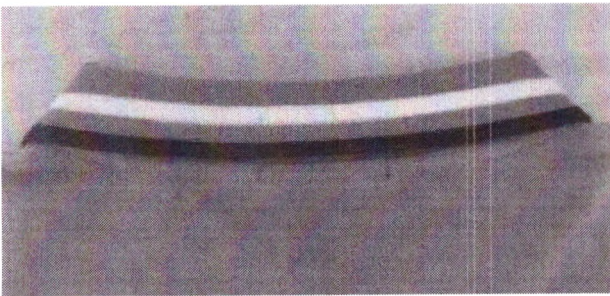
placket workmanship



collar is DTM rib 1X1

placket is self fabric

back rib collar. make rib solid



side seam slit
tape finish- make herringbone tape



herring bone tape- make dtm



STYLE NO.

ACCESORIES AND TRIMS

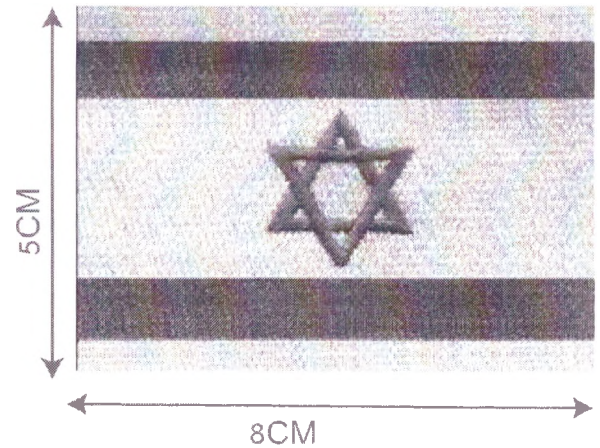
chest logo EMB

text should be optic white embrodery
frame should be blue 19-4049tpx
(same as flag EMB)



sleeve flag EMB

position 10.5cm from sleeve head
optic white
blue 19-4049tpx



back EMB



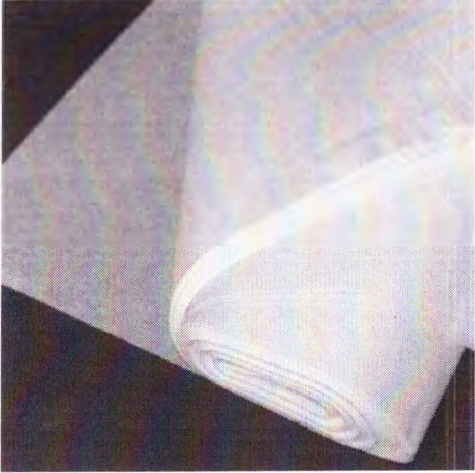
text should be optic white embrodery

Trim	size	color	quality	quantity
rib	7cm height	DTM		
herring bone tape	1cm	DTM	cotton	

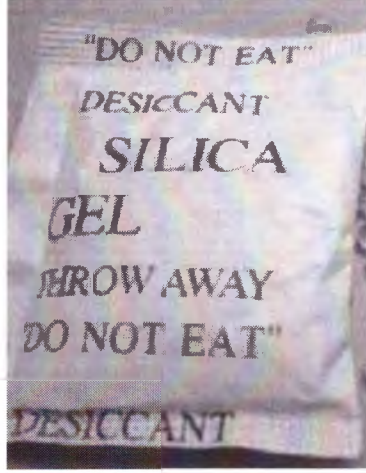
STYLE NO.

PACKING

tissue paper inside folding



silica gel inside folding



garment foding inside polybag



warning text on polybag

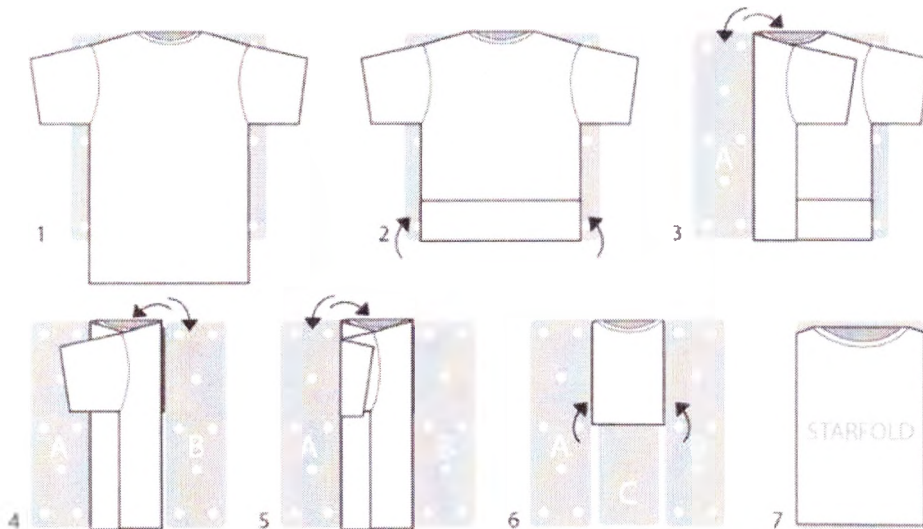
WARNING - TO AVOID DANGER OF SUFFOCATION , KEEP AWAY FROM
 BABIES AND CHILDREN . DO NOT USE IN CRIBS , BEDS , CARRIAGES OR PLAY PENS .

THIS BAG IS NOT A TOY

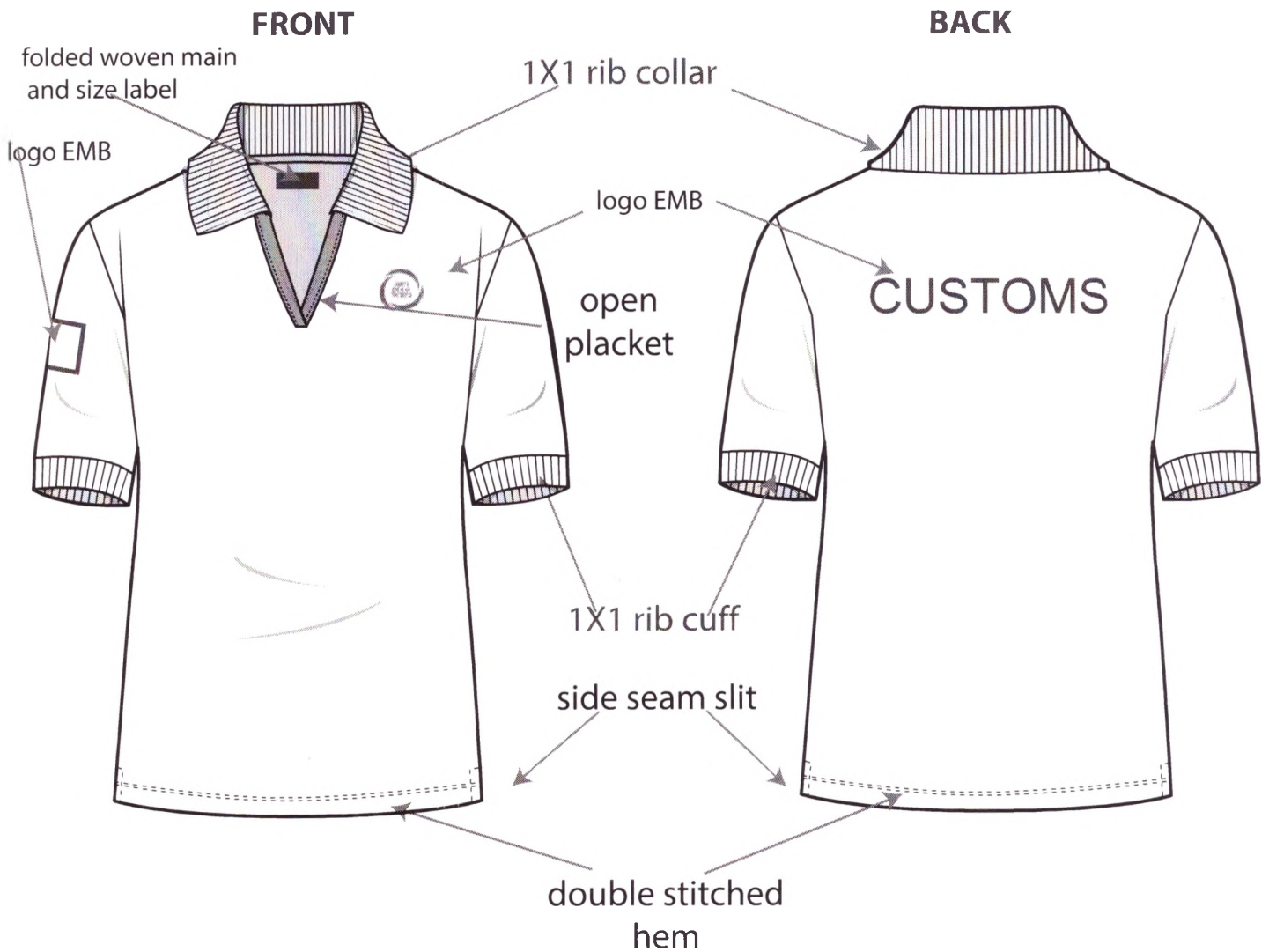
MADE IN CHINA

↑
to be update

shirt folding way



DATE: 15/9/17		
DEPARTMENT: women	BRAND:	DESIGNER:
STYLE NO.:	SEASON:	DESCRIPTION: polo T shirt short sleeve
FABRIC COMPOSITION AND TREATMENT: 70%cotton 30%polyester waffle polo 190 g+ anti pilling treatment		FABRIC WEIGHT/ GG:
COMBO'S QTY:	DD:	
PLEASE DEVELOP FIRST SAMPLE ONLY AFTER RECEIVING CONFIRMATION. FIRST SAMPLE SHOULD BE AS SIMILAR AS POSSIBLE TO ORIGINAL.		



color: blue
follow swatch color

STYLE NO.

WORKMANSHIP

placket workmanship



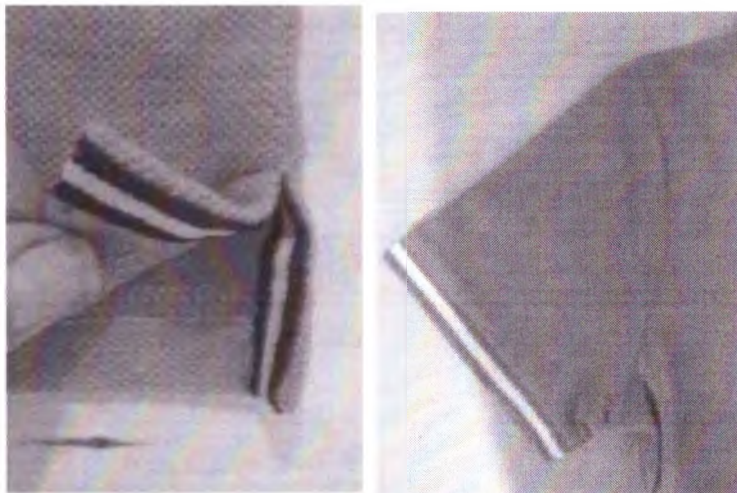
collar is DTM rib 1X1

placket is self fabric

back rib collar. make rib solid



side seam slit
tape finish- make herringbone tape sleeve with rib cuff



herring bone tape- make dtm



STYLE NO.

ACCESORIES AND TRIMS

chest logo EMB

text should be optic white embroidery
 frame should be blue 19-4049tpx
 (same as flag EMB)

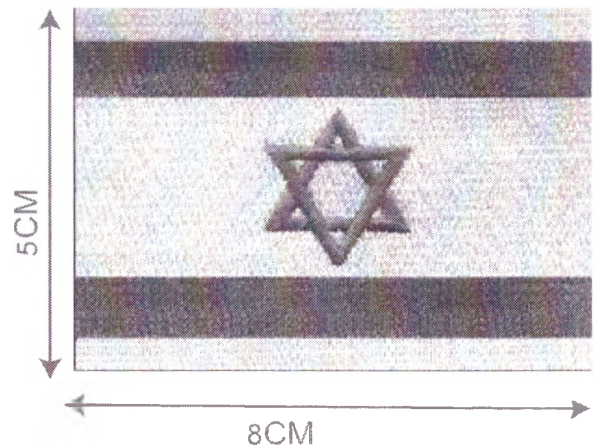


EMB



sleeve flag EMB

position 10.5cm from sleeve head
 optic white
 blue 19-4049tpx



back EMB



text should be optic white embroidery

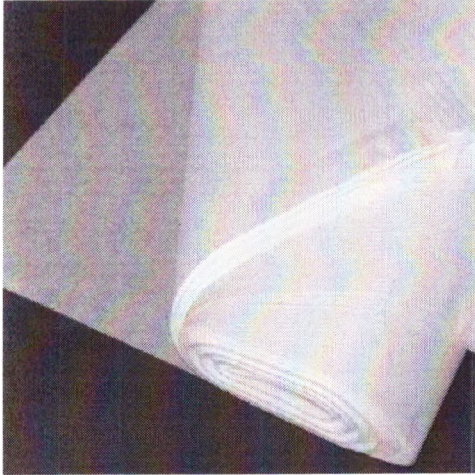


Trim	size	color	quality	quantity
rib	7cm height	DTM		
herring bone tape	1cm	DTM	cotton	

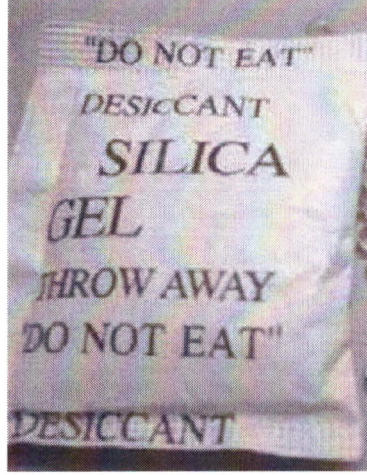
STYLE NO.

PACKING

tissue paper inside folding



silica gel inside folding



garment foding inside polybag



warning text on polybag

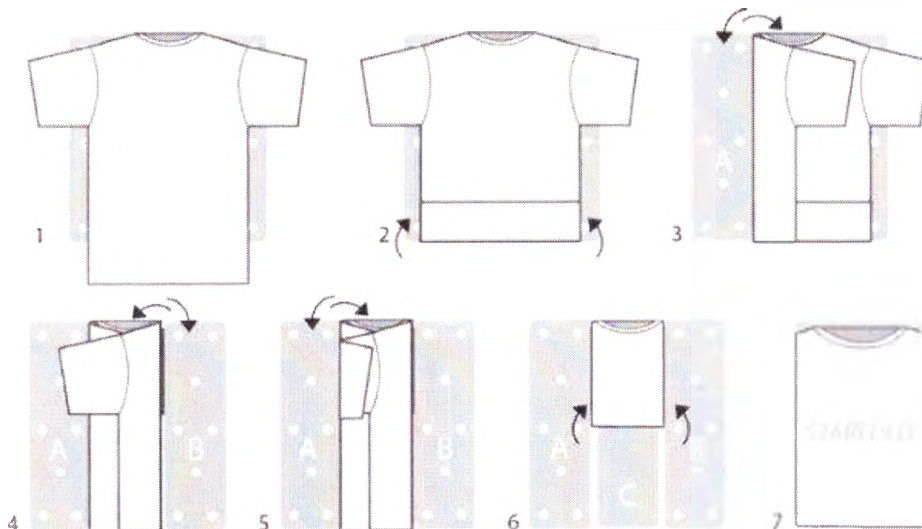
WARNING - TO AVOID DANGER OF SUFFOCATION , KEEP AWAY FROM
BABIES AND CHILDREN . DO NOT USE IN CRIBS , BEDS , CARRIAGES OR PLAY PENS .

THIS BAG IS NOT A TOY

MADE IN CHINA

↑
to be update

shirt folding way



STYLE NO.

SIZE SPEC

						Season		Page	
Polo T shirt- short sleeve		Supplier's Name		Fabric comp.		70% Cotton 30% Polyester 195 gr.		sent Date	
SIZE CHART:								16/9/17	
								grading Tolerance	
A	1/2 chest width 1cm under armhole			42.5	45.5	48.5	51.5	54.5	3 0.5
B	1/2 waist width 16 cm from armhole			41	44	47	50	53	3 0.5
B1	waist position from HSP			40.3	41	41.7	42.7	43.7	0.7/1 0.5
C	1/2 bottom width			47	50	53	56	59	3 0.5
D	total length from h.s.p			62	63	64	65.5	67	1/1.5 0.5
E	neck opening			18.5	19	19.5	20	20.5	0.5 0.3
F	front neck drop			6.5	7	7.5	8	8.5	0.5 0
G	back neck drop			1	1	1	1	1	0 0.3
H	across shoulders seam to seam			33.5	35	36.5	38	39.5	1.5 0.5
H1	front width 11.5cm bellow HSP seam to seam			27.5	29	30.5	32	33.5	1.5 0.5
H2	back width 11.5cm bellow HSP seam to seam			31	32.5	34	35.5	37	1.5 0.5
I	1/2 armhole straight			20.3	21	21.7	22.4	23.1	0.7 0.5
J	sleeve length inc cuff			19	19	19	19	19	0 0.3
K	1/2 bicep 1cm below armhole point			16.1	16.8	17.5	18.2	18.9	0.7 0.3
L	1/2 sleeve opening			15.1	15.8	16.5	17.2	17.9	0.7 0.3
M	collar point			5	5	5	5	5	0 0
N	collar height at CB (open)			4.5	4.5	4.5	4.5	4.5	0 0
O	rib height at sleeve cuff			2	2	2	2	2	0 0
P	placket length from neck line			14	14	14	14	14	0 0.3
P1	placket width			1.2	1.2	1.2	1.2	1.2	0 0
Q	side seam slit			4	4	4	4	4	0 0
R	chest EMB. Position from hsp			19.5	20	20.5	21	21.5	0.5 0.3
S	back EMB position CB			19	19	19	19	19	0 0.3
T	sleeve EMB. Position from sleeve head			10.5	10.5	10.5	10.5	10.5	0 0.3

pls. send 1st sample size XS+L

DATE: 14/09/17

DEPARTMENT: WOMEN

STYLE ref : #10

SEASON: summer 2018

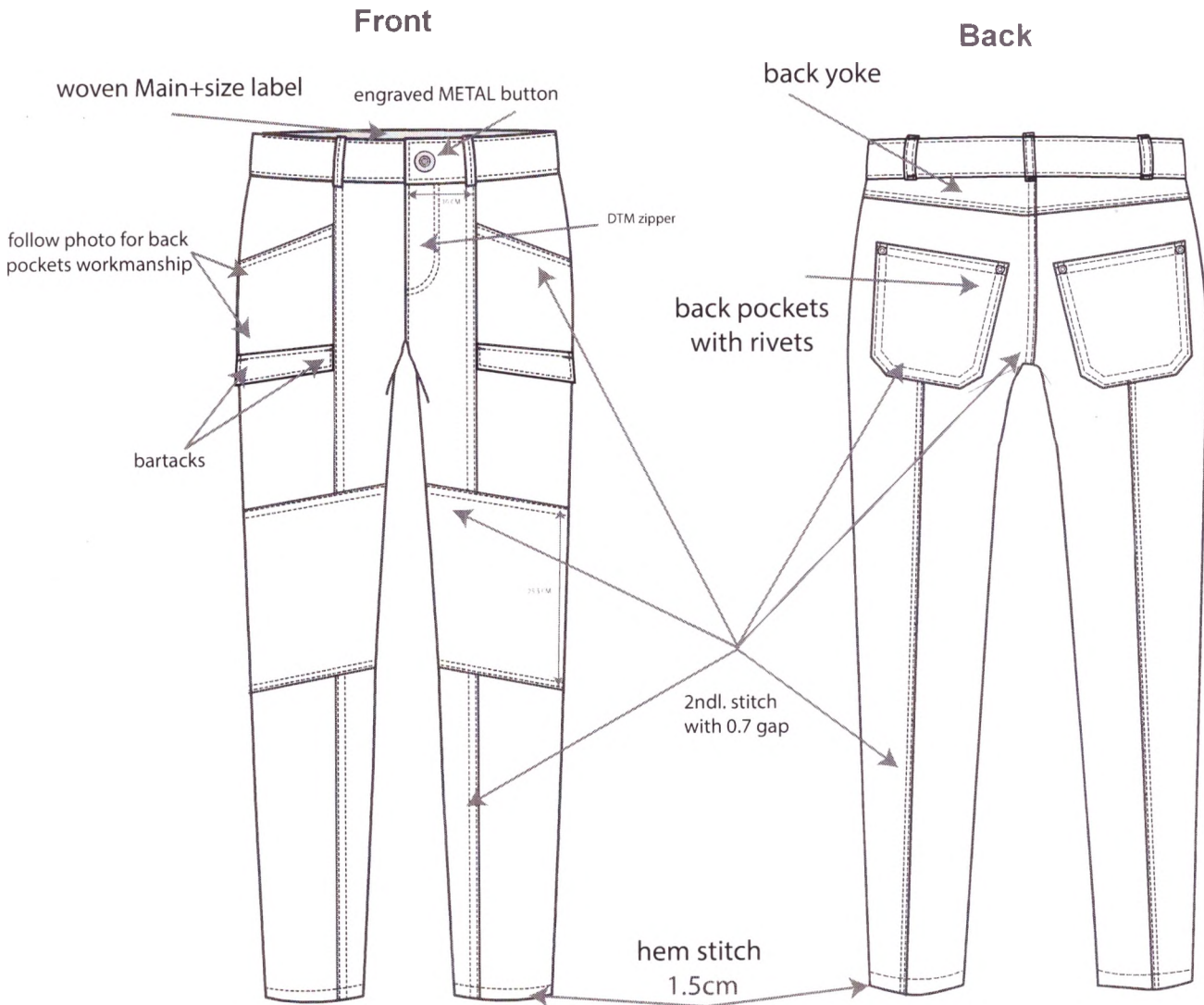
DESCRIPTION: women cargo pants

FABRIC COMPOSITION: 98% cotton , 2% spandex-garment dye with peaching finishing process

FABRIC WHEIGHT/ GG: 300g

PLEASE DEVELOP FIRST SAMPLE ONLY AFTER RECEIVING CONFIRMATION.

FIRST SAMPLE SHOULD BE AS SIMILAR AS POSSIBLE TO ORIGINAL.



all stitches should be DTM

ZIPPER SHOULD BE:

YKK, YKK Vislon, YKK Zaglan, Opti, Prym or Albert Zips

color combo: navy

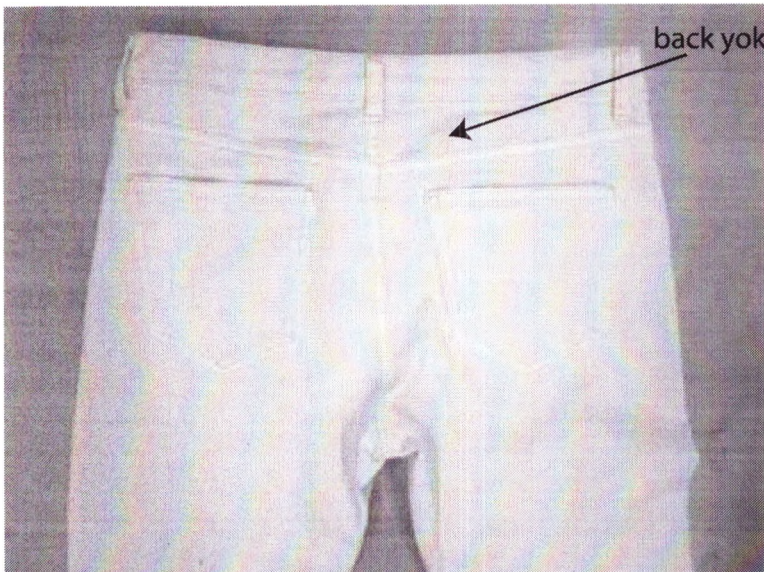
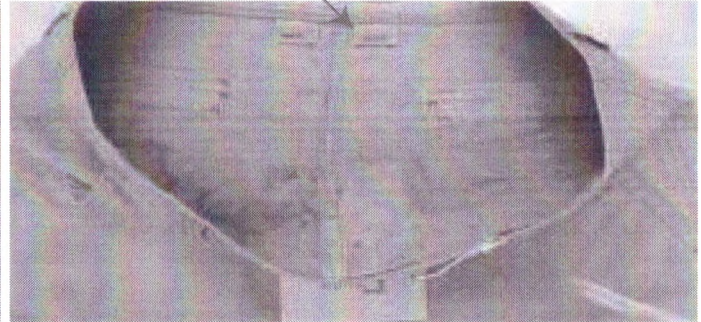
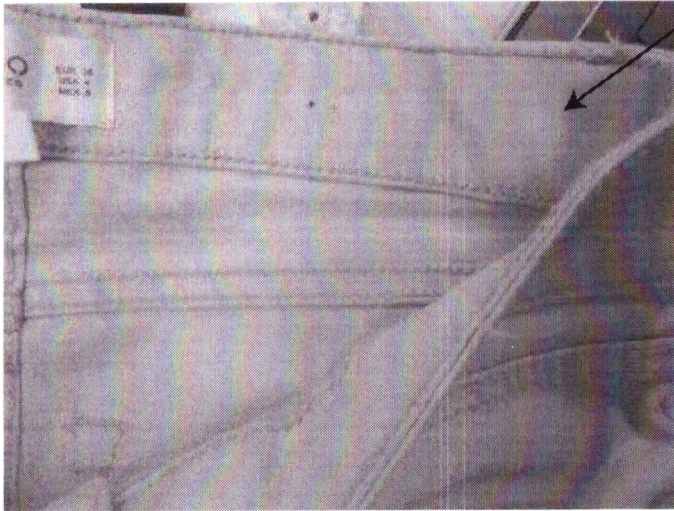
STYLE NO.-ref #10

details and workmanship

PLEASE FOLLOW ALL INNER WORKMANSHIP

inner belt- clean

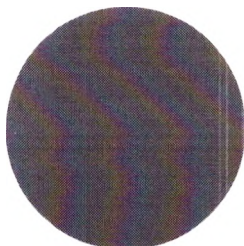
please make double lyer fabric for loops



BUTTON

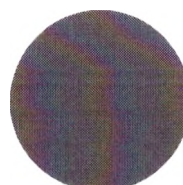
2.14 CM R

NO.34



RIVET

6 MM



metal accessories
color should be antiq
silver brased

STYLE NO.-ref #10

details and workmanship

FRONTS POCKETS PHOTOS FOR DETAIL REFERENCE AND WORKMANSHIP REFERENCE

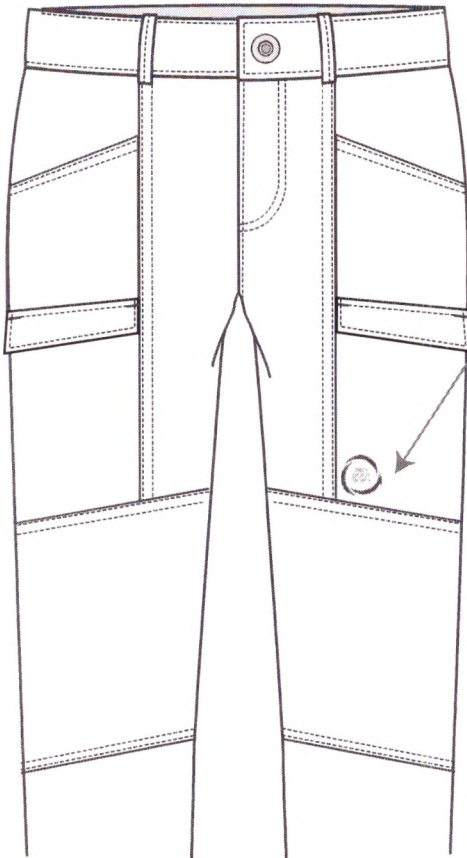


FRONT UPPER POCKET

FLAP POCKET WITH EMB.

logo EMB

text should be optic white ,embrodery frame should be pantone 19-4049 tpx should be in bottom part of pocket same as photo

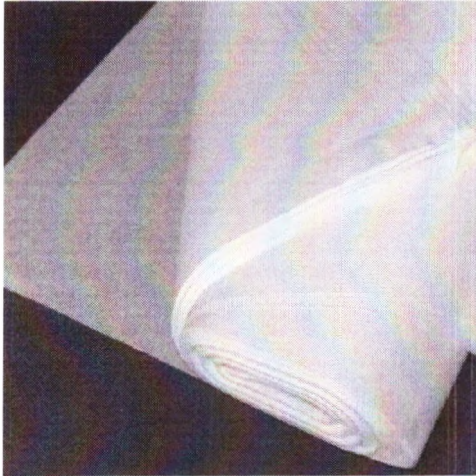


3.5CM

STYLE NO.-ref #10

packing

tissue paper inside folding



silica gel inside folding

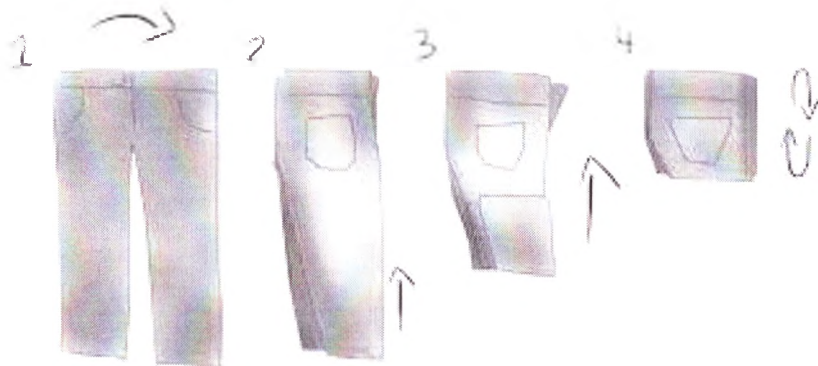


garment foding inside polybag



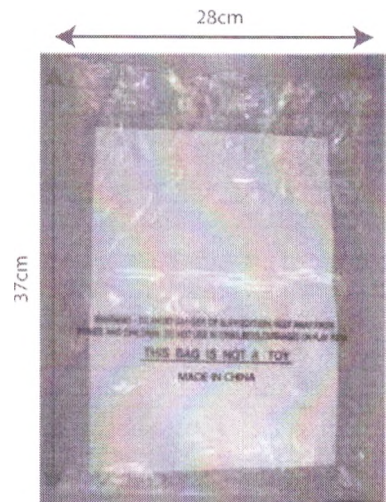
garment foding inside polybag

pants folding way



please pfold and pack only after the garment is dry!

polybag warning



**WARNING - TO AVOID DANGER OF SUFFOCATION , KEEP AWAY FROM
BABIES AND CHILDREN . DO NOT USE IN CRIBS , BEDS , CARRIAGES OR PLAY PENS .**

THIS BAG IS NOT A TOY

MADE IN CHINA

↑
to be update

STYLE NO. ref #10

SIZE SPEC

		Supplier's style #		Season		page				
Cargo pants - women		Supplier's Name		Fabric Comp.		Date				
				98% cotton 2% elastane		27/9/17				
SIZE CHART:		34	36	38	40	42	44	46	grading	Tolerance
A	1/2 waist width - when front waist in on back waist	38	40	42	44	46	48	50	2	0.7
B	1/2 hips width 14 cm from belt side cut line- straight	46.5	48.5	50.5	52.5	54.5	56.5	58.5	2	0.7
C	1/2 up leg width 1cm from crotch	29.6	30.8	32	33.2	34.4	35.6	36.8	1.2	0.3
D	1/2 knee width 30cm from crotch	19	19.5	20	20.5	21	21.5	22	0.5	0.3
D1	1/2 leg width 42cm from crotch	17	17.5	18	18.5	19	19.5	20	0.5	0.3
E	1/2 hem width	14.5	15	15.5	16	16.5	17	17.5	0.5	0.3
F	front rise incl. W.b.	24	25	26	27	28.25	29.5	30.75	1/1.25	0.3
G	back rise incl. W.b.	34	35	36	37	38.5	40	41.5	1/1.5	0.3
H	inseam	80	80	80	80	80	80	80	0	1
I	zipper length withuot w.b. to bartack	11	11	12	12	13	13	14	0/1	0
J	zipper opening width	2.5	2.5	2.5	2.5	2.5	2.5	2.5	0	0
K	w.b. height	3.7	3.7	3.7	3.7	3.7	3.7	3.7	0	0
L	front pocket opening	12	12	12.5	12.5	13	13	13.5	0/0.5	0
M	front pocket opening height along side seam	7	7	7.5	7.5	8	8	8.5	0/0.5	0
M1	front pocket depth os side seam from WB	21.5	21.5	22	22	22.5	22.5	23	0/0.5	0
N	bellloop width	1.2	1.2	1.2	1.2	1.2	1.2	1.2	0	0
N1	bellloop height	5.6	5.6	5.6	5.6	5.6	5.6	5.6	0	0
O	back pocket widht on top	14.5	14.5	15	15	15.5	15.5	16	0/0.5	0.3
P	back pocket hight	14	14	14.5	14.5	15	15	15.5	0/0.5	0.3
Q	CB yoke height	3.5	3.5	4	4	4.5	4.5	5	0/0.5	0
R	yoke height height at side seam	1	1	1.5	1.5	2	2	2.5	0/0.5	0
S	cargo pocket flap height * width	4*13	4*13	4.5*13.5	4.5*13.5	5*14	5*14	5.5*14.5	0/0.5	0
	cargo pocket depth from flap top to bottom seam	18	18	18.5	18.5	19	19	19.5	0/0.5	0